

Fall Risk & Mobility Solutions

TRAZER Activities impact physical and cognitive performance, strengthening the connection between the brain and the body. Leverage TRAZER and achieve better Brain + Body™ outcomes for Patients and ROI for your Practice.

TRAZER for Orthotics & Prosthetics



Fall Risk Assessment

TRAZER is proven to reduce falls through comprehensive Fall Testing and active intervention with targeted Activities that strengthen deficits in **Balance and Movement**.



Mobility Assessment

TRAZER captures movement at 30 frames per second to identify even the slightest deficit(s) resulting from changes that can impact mobility. Targeted Activities address them to help improve both physical and cognitive performance.



Information Bridge

TRAZER creates a shared understanding between Prosthetists, Physical Therapists, and Physicians through quantifiable data for more objective and informed decisions and planning.



Quantifiable Outcomes

TRAZER tracks key metrics related to **Balance, Dynamic Movement, Kinematics**, and **Neuromechanics** for accurate measurement and reporting from session-to-session and over time.

ASSESSMENT

Fall Test

- Chair Stand-30
- Timed Up & Go (TUG)
- Global Performance Assessment (GPA-120)
- Bilateral, Tandem, and Unilateral Balance

Mobility

- REACT
A single-step Test that measures reaction time and agility.
- VECTOR Test
A multi-step movement capability test that isolates linear, lateral, diagonal and vertical movement.

INTERVENTION

Fall Risk

- BALANCE
 - 40+ Drills
 - 11 Workouts
 - 5 Games
- REACTION TIME
 - 20+ Drills
 - 8 Workouts
 - 2 Games
- SPEED
 - 9 Drills
 - 7 Workouts
 - 1 Game
- SYMMETRY
 - 16 Drills
 - 7 Workouts

Enhance Mobility

- ENDURANCE
 - 20+ Drills
 - 8 Workouts
 - 4 Games
- STRENGTH
 - 11 Drills



100+ Activities

- Immersive Simulation
- Reaction-based Challenges
- Immediate Post-Activity Feedback
- Comprehensive & Quantifiable Data

O & P Assessment

- Timed Up & Go (TUG)
- Chair Stand 30
- Mini-T
- Double Leg STEADI Balance
- RAS-90

Prosthetic Alignment

TRAZER comprehensively measures balance and movement to understand functional performance and helps make the Assessment and Fitting processes – especially in prosthetic alignment – highly efficient and validated by third-party data.

Collaboration

TRAZER provides Prosthetists and Physical Therapists with quantitative data to facilitate effective device alignment with the patient's physical capabilities and goals, fostering a shared understanding and language.

Rehabilitation

TRAZER promotes increased compliance and adoption through engaging Activities and immediate feedback.

TRAZER is a bridge between Prosthetists and Physical Therapists.

Opportunities

TRAZER helps improve efficacy, efficiency, and expediency from Fit through Rehabilitation.

TRAZER Activities are aligned with CPT codes for billable collaboration with Physical Therapists via Telehealth.

The TRAZER System

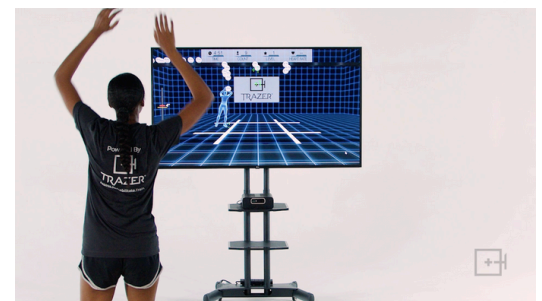
Hardware: The TRAZER XP Unit

A specialized computer and high-powered, depth-sensing camera track 32 key movement points on the body at 30 frames per second (fps) to **capture what the naked eye can't**.



Software: The TRAZER Software

The TRAZER app-based software features 100+ reaction-based activities tracking physical and cognitive reactions and generating data related to **Dynamic Movement**, **Kinematics**, **Balance**, and **Neuromechanics**.



The TRAZER Portal

The HIPAA-compliant TRAZER Portal serves as the command center, securely encrypting and storing data. From the Portal, Administrators can create/manage Users and set permissions for Staff, customize the view of Activities by location(s), leverage reporting and analytics capabilities, and more.

